

Government of Thailand

Community Organizations Development Institute
Chulalongkorn University Social Research Institute
Department of Local Administration
Senate Sub-committee on Social Development and Human Security

Chumchon Thai Foundation
Thailand Environment Institute

United Nations Development Programme
UN-HABITAT Regional Office for Asia & the Pacific
UNESCO Asia and Pacific Regional Bureau for Education

**Support for Rehabilitation of Traditional Communities and Municipalities
in Tsunami-affected Areas in Thailand**

Programme Period: April 2005-December 2005
Programme Component: Fostering democratic governance;
Crisis Prevention and Recovery
Project Title: Support for Rehabilitation of Traditional
Communities and Municipalities in Tsunami-
affected Areas in Thailand
Project ID: 00044314 (ATLAS Project ID)
TSU-REG/THAI-05/S/NF01-REGION
Project Duration: 9 months
Management Arrangement: Direct Execution

Total budget: \$1,000,000
General Management Support Fee \$65,420
Allocated resources: _____
• Government _____
• Regular _____
• Other:
 ○ Donor Canadian Government
 \$1,000,000

**Agreed by Community Organizations Development Institute, Ministry of Social Welfare
and Human Security:**

Ms. Somsook Boonyabanha
Director

Date

Agreed by United Nations Development Programme :

Mrs. Joana Merlin-Scholtes
Resident Representative

Date

Agreed by Thailand International Cooperation Agency:

Mr. Piamsak Milintachinda
Director-General

Date

UNDAF Outcomes:	<p>Goal 1: Promote people’s participation in the development process and decision-making at the local level.</p> <p>Goal 3: Support and promote decentralization and strengthen local governance.</p>
UNDAF Indicators:	<p>Goal 1: Promote people’s participation in the development process and decision-making at the local level.</p> <ul style="list-style-type: none"> • Community’s projects become key management tools in reducing the impact of the crisis • Participatory approach process created among community people • Numbers of meetings, seminars and workshop organized during the implementation period • Community plans formulated and submitted to local government agencies • Local development plan initiated through cooperation among all partners at the local level <p>Goal 3: Support and promote decentralization and strengthen local governance.</p> <ul style="list-style-type: none"> • Manual published for widely distributed in local areas • Networks strengthened, knowledge and experience shared with neighbouring countries • Training organized for strengthening on capacity of personnel I
Expected Outcomes:	<ol style="list-style-type: none"> 1 Victims in relief centres in tsunami-affected provinces are organised and have developed plans for the rehabilitation of their respective settlements, established new support mechanisms within their communities and where necessary acquire skills for alternative livelihood. 2 Traditional Communities including sea gypsies are empowered to plan and implement the rehabilitation and recovery needs of their respective areas which strengthen the existing support networks, and which are supportive of their traditional livelihoods and/or livelihoods of their choices, in partnership with provincial and local authorities. 3 Capacity of provincial and local authorities increased in participatory rehabilitation planning, which reduces vulnerability of the poor to future disasters. 4 Community and local government organisation networks are strengthened. 5 Mechanisms in place to preserve traditional cultures and promote participation of indigenous people in the community development and management of marine resources conservation
Outcome Indicators:	<ol style="list-style-type: none"> 1 Victims in relief centres in tsunami-affected provinces are organised and have developed plans for the rehabilitation of their respective settlements, established new support mechanisms within their communities and where necessary acquire skills for alternative livelihood.

	<ul style="list-style-type: none"> 1.1 Community organised into working groups and planning on rehabilitation and livelihood restoration developed, including start-up activities of the rehabilitation plan. 1.2 Affected households acquired skills in alternative livelihood and start-up activities initiated for new livelihood. <p>2 Traditional Communities including sea gypsies are empowered to plan and implement the rehabilitation and recovery needs of their respective areas which strengthen the existing support networks, and which are supportive of their traditional livelihoods and/or livelihoods of their choices, in partnership with provincial and local authorities.</p> <ul style="list-style-type: none"> 2.1 Community groups organised and take primary lead in the development of a strategic framework which outlines their rehabilitation and recovery needs. 2.2 Community groups implement aspects of rehabilitation and recovery plan in partnership with local government organisations and other stakeholders. 2.3 Living conditions of affected communities improved and cultural support mechanisms strengthened. <p>3 Capacity of provincial and local authorities increased in participatory rehabilitation planning, which reduces vulnerability of the poor to future disasters.</p> <ul style="list-style-type: none"> 3.1 Partnerships built between local communities and local government organisations 3.2 Joint planning and implementation of rehabilitation plans between communities and local government organisations. 3.3 New skills acquired by local government staff in participatory planning and disaster preparedness. <p>4 Community and local government organisation networks are strengthened.</p> <ul style="list-style-type: none"> 4.1 Traditional and sea gypsy communities share lessons and experiences on their respective rehabilitation planning and implementation strategies. 4.2 Models on participatory rehabilitation planning replicated in other local government organisations. <p>5 Mechanisms in place to preserve traditional cultures and promote participation of indigenous people in the community development and management of marine resources conservation</p> <ul style="list-style-type: none"> 5.1 Recommendations developed by indigenous people for conversation of marine resources incorporated into national conversation plans (including proposed world heritage sites.) 5.2 Models and recommendations for stakeholder engagement with indigenous communities developed. 5.3 Indigenous cultural exhibition hut and local school curriculum established.
--	-------------------------------------------------------------------------------------------------------------------------------------------------------------------------------------------------------------------------------------------------------------------------------------------------------------------------------------------------------------------------------------------------------------------------------------------------------------------------------------------------------------------------------------------------------------------------------------------------------------------------------------------------------------------------------------------------------------------------------------------------------------------------------------------------------------------------------------------------------------------------------------------------------------------------------------------------------------------------------------------------------------------------------------------------------------------------------------------------------------------------------------------------------------------------------------------------------------------------------------------------------------------------------------------------------------------------------------------------------------------------------------------------------------------------------------------------------------------------------------------------------------------------------------------------------------------------------------------------------------------------------------------------------------------------------------------------------------------------------------------------------------------------------------------------------------------------------------------------------------------------------------------------------------------------------------------------------------------------------------------------------------------------------------------------------------------------------------------------------------------------------------------------------------------------------------------------------------------------------------------------------------------------------------------------------------------------------------------------------------------------------------------------------------------------------------------------------------------------------------------------------------------------------------------------------------------------------------------------------------------------------------------------------------------------------------------------------------------------------------------------------------------------------------------------------------------------

Expected Outputs :	<p>1: Traditional Communities including sea gypsies empowered to plan and implement the rehabilitation and recovery needs of their respective areas.</p> <p>2: Existing support networks strengthened to provide sustainable livelihood options and mechanisms for these communities to participate in the development of conservation regulations in partnership with provincial and local authorities.</p> <p>3: The capacity of provincial and local authorities increased in participatory rehabilitation planning.</p> <p>4. Documentation of lessons leant</p>
Implementing Partners:	<ul style="list-style-type: none"> • Community Organizations Development Institute • UN-HABITAT Regional Office for Asia & the Pacific • UNESCO Asia and Pacific Regional Bureau for Education • Chumchon Thai Foundation • Chulalongkorn University Social Research Institute

Government of Thailand

Community Organizations Development Institute
Chulalongkorn University Social Research Institute
Department of Local Administration

Chumchon Thai Foundation
Thailand Environment Institute

United Nations Development Programme
UN-HABITAT Regional Office for Asia & the Pacific
UNESCO Asia and Pacific Regional Bureau for Education

Support for Rehabilitation of Traditional Communities and Municipalities in Tsunami-affected Areas in Thailand

The recent tsunami has affected six southern provinces along the Andaman coastline namely Phuket, Phang Nga, Krabi, Ranong, Trang and Satun. The report from the Royal Thai Government indicates that 24 districts, 78 tambons (sub-districts) and 292 villages have been seriously affected. The tsunami not only affected hotels, resorts and commercial operators, but has also had a severe impact on residential fishing villages, including sea gypsy villages and traditional communities living along the shoreline who depend on fishing and the tourist industry for their livelihood.

The plight of traditional and sea gypsy communities is somewhat unique. They are a distinctive group of people whose lifestyles, languages and cultures differ from the rest of Thai Society. Due to their semi-nomadic lifestyle and difference in culture and language many of these communities, have not actively participated with relevant local government organisations in the planning and sustainable development of their settlements or livelihoods. As a result, even though most of these communities have been residing in the same locations for decades many families still lack access to basic public services and secure tenure. Much of territory traditionally inhabited by the indigenous sea gypsy groups has been lost to tourism development; however, they have shared almost no benefits from such change. The rapid development occurring along the Andaman coast over the past few decades has deprived many of the indigenous people from access to their traditional marine resources and curtailed their nomadic movements. The subsequent designation of many of the remaining areas as marine protected areas has meant that the people have had to contend with the regulations intended to ensure environmental conservation whilst disenfranchising them from any potential benefits derived from either tourism development or from enhanced conservation. The recent tsunami has compounded these problems and communities are now faced with the challenge of accessing the necessary resources and engaging relevant local level government administrations for their rehabilitation and recovery needs.

The loss of property, damage to infrastructure and homes, including loss of entire settlements and livelihoods has placed a huge burden on local government organisations, not only in ensuring relief to affected households but more so with respect to planning and management of recovery and rehabilitation efforts in their affected areas.

This project aims to:

- support the rehabilitation and recovery needs of traditional and sea gypsy communities by strengthening their existing support networks, providing technical assistance and resources and linking these communities to relevant stakeholders to ensure sustainable recovery and long term development.
- promote indigenous cultures and promote the participation of indigenous communities in conservation planning.
- build the capacity of local government organisations in participatory rehabilitation planning with the added aim of ensuring that the vulnerability against future disasters of affected communities is reduced.

The project will document best practices and lessons learnt by both communities and local government organisations and disseminate the information for enhancing knowledge base networking and building support networks for communities and relevant local government institutions.

Section I

Elaboration of the Narrative

Part I. Situation Analysis

I.1. Background and Context

The recent tsunami has affected six southern provinces along the Andaman coastline namely Phuket, Phang Nga, Krabi, Ranong, Trang and Satun. The report from the Royal Thai Government indicates that 24 districts, 78 tambons (sub-districts) and 292 villages have been seriously affected. The latest estimate of people directly affected by the disaster (loss of a family member or home) stands at 91,638, comprising an estimated 20,537 households¹.

The tsunami not only affected hotels, resorts and commercial operators, but has also had a severe impact on residential fishing villages, including sea gypsy villages and traditional communities living along the shoreline who depend on fishing and the tourist industry for their livelihood. There are approximately 7,000 (1,750 households) sea gypsies in Thailand living mainly in Ranong, Pang Nga, Phuket, Krabi and Satoon Province. There are over 400 fishing communities living along the Andaman coastline affected by the tsunami, many of which are traditional and sea gypsy communities. Recent assessments undertaken by Community Organizations Development Institute (CODI) indicates that approximately 1000 sea gypsy households have been affected by the tsunami. The extent of the destruction in both sea gypsy and traditional communities varies and in some cases entire villages have been washed away, leaving households both without shelter and a livelihood.

The plight of traditional and sea gypsy communities is somewhat unique. They are a distinctive group of people whose lifestyles, languages and cultures differ from the rest of Thai Society. By definition most of these communities are nomadic however most as noted above are now based in semi-permanent settlements along the Andaman Coast. Due to their semi-nomadic lifestyle and difference in culture and language many of these communities, have not actively participated with relevant local government organisations in the planning and sustainable development of their settlements or livelihoods. As a result, even though most of these communities have been residing in the same locations for decades most do not have access secure tenure and basic public services. The recent tsunami has compounded these problems and communities are now faced with the challenge of accessing the necessary resources and engaging relevant local level government administrations for their rehabilitation and recovery needs.

Furthermore much of territory traditionally inhabited by the indigenous sea gypsy groups has been lost to tourism development; however, they have shared almost no benefits from such change. The rapid development occurring along the Andaman coast over the past few decades has deprived many of the indigenous people from access to their traditional marine resources and curtailed their nomadic movements. The subsequent designation of many of the remaining areas as marine protected areas has meant that the people have had to contend with the regulations intended to ensure environmental conservation whilst disenfranchising them from any potential benefits derived from either tourism development or from enhanced conservation. This situation has been exacerbated by the tsunami as the little livelihood

¹ UN Resident Coordinator Disaster Field Situation Report 7, and Ministry of Social Development and Human Security

opportunities available to the sea gypsies, tourism and fishing, have virtually evaporated overnight.

One of the great strengths of traditional and sea gypsy communities is their tradition of the collective and the spirit of building together. Efforts through the support of NGO's and donors agencies are required to strengthen and maintain these networks and build bridges with relevant stakeholders and government organisations. This will enable the sustainability of rehabilitation and recovery efforts and address previous development shortfalls of these communities. The approach used by traditional communities also needs to be modelled so that lessons can be learnt between communities and recovery approaches where applicable be replicated.

The loss of property, damage to infrastructure and homes, including loss of entire settlements and livelihoods has placed huge burden on local government organisations. The burden lies not only in ensuring relief to affected households but more so with respect to planning, management and accessing the necessary technical and financial resources required for the recovery and rehabilitation efforts in the tsunami affected areas. Recovery and rehabilitation plans initiated by local government organisations have to mitigate vulnerability of the poor against the negative effectives of this disaster as well as assist affected households in rebuilding their settlements and livelihoods which will ensure future sustainable growth of the respective cities, towns, tambons and villages. The successful rehabilitation of affected villages, towns or cities can only be achieved through the effective participation of people affected by the recent tsunami. Local government administration has to place huge emphasis on participatory rehabilitation planning and implementation.

I.2. Statement of Problems

The strategic emergency intervention of the Royal Government of Thailand (RTG) in the areas of:

- establishment of relief centres
- providing compensation to families who lost a family member;
- provision of funds for the restoration of existing livelihoods i.e. repairs and rebuilding of fishing boats and;
- construction of temporary and permanent shelter of affected communities is commendable.

The total Cabinet approved budget for the RTG's tsunami response is 5,252 million baht².

With respect to rehabilitation, recovery of affected communities and depending on their tenure status the following strategies/broad policies are being implemented across the six provinces:-

- i. Families with legal tenure
Families with legal tenure who wish to relocate will be given an option to transfer to new sites. Families who have legal tenure and wish to remain on the existing plots have the choice of having a house built by the state for an estimated budget of 100,000 Baht or receiving compensation by the state for an estimated amount of 30,000 Baht.
- ii. Families without legal tenure
Where families do not have legal tenure the policy proposed is for communities to be relocated from the sites they previously occupied to new public sites where tenure will be

² UNDAC/UNRC Situation Report No. 8 – 11 January 2005

based on long-term, low rate rental and where houses will be built by the state. The government is attempting to use this disaster as an opportunity to regulate and enforce land use planning and the proper use of building codes and regulations.

With respect to employment, the Ministry of Labour estimates reveal that 56,960 people have lost their means of income as a result of the tsunami. The RTG plans to establish an employment programme to provide temporary employment for 30,000 people to work in local government agencies for one month at a cost of 116 million baht, organising occupational training for 10,000 people at a cost of 45 million baht and providing a daily stipend to 28,340 people³. The fisheries department has 1.343 million baht approved by Cabinet to assist 27,828 fishermen. This includes the repair of 3,426 small fishing boats and 544 larger fishing boats.

Whilst the above efforts go far in assisting affected communities on their road to recovery, and most physical reconstruction needs are being met, strategic recovery gaps remain for traditional and sea gypsy communities. These gaps are primarily in the areas of strengthening community support mechanisms and networks, fostering partnerships between local government organisations and affected communities and supporting and training affected households for alternative livelihoods. The tsunami has opened strategic development issues for these vulnerable communities, particularly as planning and implementation moves forward on land use management, environmental protection and shelter planning.

The outcome of these planning initiatives has a major impact on vulnerable communities, as it affects their access to existing livelihoods and as such impacts on their traditional way of living. Many traditional and sea gypsy communities are now also faced with the harsh reality of finding alternative livelihoods as their existing source of income through fishing may no longer be viable due to the demise of the head of household, lack of appropriate fishing gear or the need to move to area where land tenure is more secure. These communities require support not just for physical rehabilitation but also for initiatives which focus on rebuilding their lives. The initiatives should strengthen community support systems, foster partnerships with the respective local government organisations and ensure that rehabilitation and recovery efforts are sustainable.

The areas where most deaths occurred from the tsunami were those places where the coral reefs had been destroyed (through tin dredging and dynamite fishing), where the mangrove forests had been cleared and the headlands deforested, and where the strand lagoons had been drained to make way for more tourist development. Specialized UN agencies will therefore have to become actively involved with government agencies which are now reviewing the whole issue of the management of coastal and marine areas.

Instead of further marginalizing the communities, the management of the marine protected areas could benefit from one of the remaining assets that the indigenous people have – their unique traditional knowledge and skills. This project can help provide livelihood opportunities for the indigenous people, based on traditional practices and values, which will allow them to remain in their traditional environment and contribute to their economic development and increased prosperity as part of larger Thai society.

As communities struggle to rebuild their lives there are also huge challenges faced by the support providers, particularly local government organisations, who are trying to co-ordinate multi-sector rehabilitation planning efforts. The challenges range from co-ordinating relief

³ UNDAC/ UNRC Situation Report No.8 – 11 January 2005

efforts, land use planning, shelter inputs, and the rehabilitation of basic services. These elements are required to be in an integrated rehabilitation and recovery plan to be developed by local government organisations in conjunction with the affected communities and relevant stakeholders. This will ensure the sustainability and long term development of the respective village, Tambon or city. Many local government organisations currently do not have the necessary skills and resources to undertake participatory rehabilitation planning and hence their capacity needs to be built through the provision of technical assistance and necessary demonstration projects.

Part II. Strategy

II.1 UNDP Strategic Areas of Support

Having considered the existing gaps in policy and implementation of the rehabilitation and recovery needs of sea gypsy and traditional communities as well as capacity gaps in local government organisations, the UNDP will initiate strategic interventions in the form of technical assistance and demonstration projects for the development and implementation of a multi-stakeholder rehabilitation and recovery plan. The UNDP will cooperate with the Department of Local Administration (DLA), relevant local government structures, CODI and its networks of NGOs, Chulalongkorn University and specialized UN sister agencies for implementation of the above initiative. The strategic interventions will aim to strengthen and maintain community development processes and build capacity of local government organisations in participatory planning, develop sustainable livelihoods and ensure normalization of tsunami victims and affected communities.

II.2. Project Objectives

The primary aim of the project is to strengthen both community and local government organisations for the development and implementation of a strategic rehabilitation and recovery plan which addresses the impact of the recent tsunami.

More specifically the project aims to:

- (1) Provide technical support to communities in relief centers towards the planning of their rehabilitation and recovery needs.
- (2) Support and strengthen rehabilitation and recovery efforts of traditional and sea gypsy communities focusing on traditional and alternative livelihoods, shelter alternatives, and preservation of cultural heritage and community support systems.
- (3) Promote and build capacity of local government organisations in participatory rehabilitation planning for the recovery and rehabilitation of affected households against the recent tsunami
- (4) Share knowledge and document good practices and lessons learnt of both local government organisations and communities and promote the sharing of knowledge and experiences.
- (5) Promote cultural heritage and build capacity of indigenous people to participate, in post-tsunami community development, marine resources conservation and the exploration of co-management options for protected areas and proposed world heritage sites.

II.3. Project Components

The Project will comprise five components.

Component 1: Support to Tsunami Relief Centers

Where gaps exist and needs require, the project will provide technical support to communities in tsunami relief centers as they plan their rehabilitation and recovery needs. Specific attention will be given to training and/or support towards the development of alternate livelihoods for widows (female headed households) as well as widowers who now have to establish alternative support systems for child care and rearing. Community organisation and networking processes will also be supported.

Component 2: Support Rehabilitation and Recovery Efforts of Traditional and Sea Gypsy Communities.

The project aims to target four traditional including sea gypsy communities and support their rehabilitation and recovery efforts. The primary target communities are Sai Dam in Ranong province, Tung Wa in Phang Nga province and Ta Chat Chai in Phuket province. Secondary target communities include Koh Muk Island in Trang province. Traditional support mechanisms used by this target group for the rebuilding of their lives will be strengthened through community organizing and development processes. Technical support will be provided to target communities for the establishment of a multi-stakeholder forum for the development of their rehabilitation and recovery plan. The project will provide technical support for the implementation of the rehabilitation and recovery plan which includes but not limited to some of the following elements:

- livelihood restoration including alternative career development;
- solid waste management;
- preservation and promotion of traditional culture;
- water and sanitation; and
- settlement planning and landscaping.

A crisis such as the tsunami is an opportunity to draw a community together. The project will promote the networking of communities, so that lessons and good practices can be shared and provide other traditional and sea gypsy communities with a model for planning and implementation of their rehabilitation plan. The project will also facilitate brokerage of relationships between communities and provincial & local authorities.

Component 3: Building the Capacity of Local Government Organisations in Participatory Rehabilitation Planning.

This component of the project will focus on strengthening the capacity and knowledge base of local government organisations affected by the tsunami in the areas of participatory rehabilitation planning and sustainable development. Three local government organisations will be identified in close consultation with the Department of Local Administration for piloting the participatory development process. Within each of the respective local governments identified pilot activities, developed through the participatory rehabilitation planning initiatives, will be implemented.

Component 4: Knowledge Sharing and the Documentation of Change, Good Practices and Lessons Learnt

The tsunami is an unprecedented experience for Thailand, both in nature, scope and magnitude of work required. The project will support the sharing of global experiences and knowledge relevant to key post-tsunami issues and capacity needs of local partners (such as participatory response planning, vulnerability and risk assessments, livelihood restoration, land tenure and land rights and so on). The objective is to provide practical tools and capacity development for relevant organisations involved in participatory development and rehabilitation planning. The component will also support the documentation of change, good practices and lessons learnt, including good practices of local government organisations, community-based organisations, and management and coordination for the participatory implementation of rehabilitation and recovery needs of tsunami affected communities

Component 5: Promote cultural heritage and participation of indigenous people in post-tsunami development and co-management of marine resources conservation in protected area.

This component of the project will focus on building the capacity of indigenous people to actively participate, in the post-tsunami development and co-management of marine resources conservation. It aims to open and structure permanent avenues of communication between indigenous communities and those responsible for the conservation and maintenance of marine and coastal protected areas along Thailand's Andaman Sea coast. The project will also source, revive and apply traditional knowledge and skills as the basis for an innovative participatory management system with articulate management objectives. This component will also develop a 'wise-practices' model for a mutually-beneficial alliance for the sustainable development of the Surin Islands and other sea gypsy communities, particularly those in close association with protect areas. This will be based on research already conducted into specific environmental and social problems providing the foundation for negotiation of appropriate management tools to implement solutions.

II.4 Targeted Beneficiaries

Direct Beneficiaries:

- (1) Tsunami affected victims still residing in relief centers
 - *Phang Nga province:* Bang Muang Relief Centre,
- (2) Selected Traditional and Sea Gypsy Communities
 - *Phang Nga province:* Tung Wa, Ko Surin Islands
 - *Phuket province:* Ta Chat Chai,
 - *Ranong province:* Sai Dam Island and Koh Lao
- (2) Selected network of NGOs working in Ranong province, Phuket province and Phang Nga province
- (3) Relevant provincial and local authorities

Indirect Beneficiaries:

- Tourist Operators
- Network of traditional and sea gypsy communities in the tsunami-affected areas.

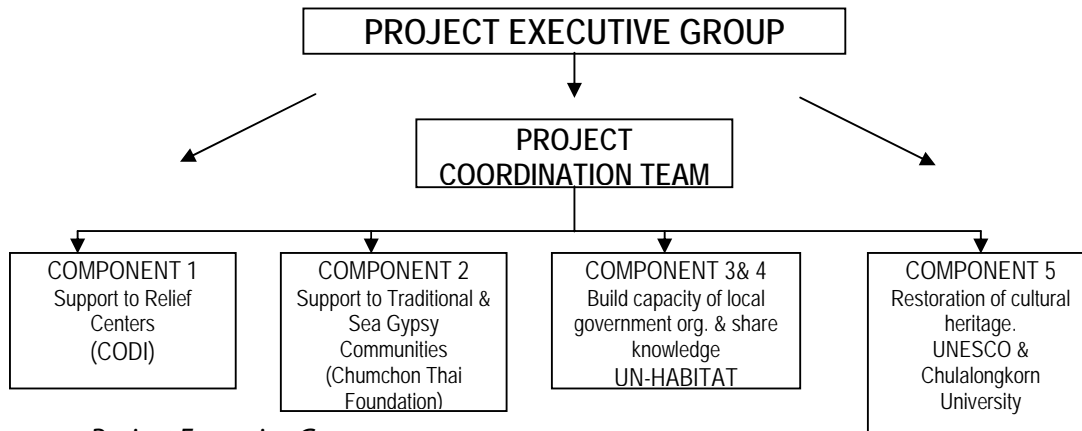
II.5. Project Strategic Principles

The project will be implemented in accordance with the following strategic principles:

- Provide strategic support where gaps exist, with attention to poor villages and vulnerable traditional and indigenous communities, for quickest normalisation of livelihood of tsunami-affected households
- Support participatory approaches in planning and decision-making
- Work towards community empowerment and community partnership with provincial and local authorities concerned.
- Apply knowledge management approach
- Take full advantage of UNDP's global development network and Thailand's development experience for a two-way relationship
- Partnerships and collaboration with other UN agencies.

Part III. Management Arrangements and Implementation Modalities

The overall strategic direction of the project will be provided by a Project Executive Group. The Project will be implemented under the Direct Execution modality with UNDP providing overall management and co-ordination of the project and CODI, Chumchon Thai Foundation, Chulalongkorn University Social Research Institute, UN-HABITAT Regional Office for Asia & the Pacific and UNESCO Asia and Pacific Regional Bureau for Education as implementing partners for the various components.



a. Project Executive Group

The Project Executive Group will be responsible for making executive management decisions for a project when guidance is required by the Project Coordinator, including approval of project revisions. Members will comprise representatives from the Office of the National Economic and Social Development Board (NESDB), Department of Local Administration (DLA), TICA, CODI, Chumchon Thai Foundation, Chulalongkorn University Social Research Institute, UNDP, UNESCO, UN-HABITAT, Senate Committee on Social Development and Human Security, one or two NGO representatives and/or senior experts on related fields. UNDP will provide secretariat support to the group.

b. Project Coordination Team

A Project Coordinator together with a Project / Finance Assistant/s will be assigned to the project for the operational support, day to day management and coordination with implementing partners. The Project Coordination team will report directly to the UNDP Responsive Governance Manager/Policy Advisor, who works under direct supervision of the Deputy Resident Representative, with overall guidance from the Resident Representative.

c. Component 1: Support to Relief Centres

The RTG has assigned the Community Organizations Development Institute (CODI) of the Ministry of Social Development and Human Security, which specialises in community development, sustainable housing and urban management, to look into the process of community organising for sustainable settlement. In executing this responsibility CODI, through its network of NGOs, has already progressed far in organising communities around their development needs in the various relief centres throughout the six provinces. As the objective of this component is to provide technical support to communities in relief centers towards the planning of their rehabilitation and recovery needs, CODI through its assigned role for the tsunami is best placed to implement this component. CODI through its

network of NGOs will establish working groups consisting of relevant stakeholders and government agencies to provide the necessary technical support for livelihood restoration and or alternate career development.

UNDP will enter into an agreement with CODI for implementation of this component. The Standard Letter of Agreement (LOA) will specify the nature and scope of CODI's responsibilities for this component, services to be provided, reporting requirements and other necessary provisions.

d. Component 2: Supporting Rehabilitation and Recovery Efforts of Selected Traditional Communities.

The Chumchon Thai Foundation has been identified for the implementation of this component based on its existing work with the affected communities in the proposed project sites and the progress made in organizing and assisting the families with their rehabilitation efforts.⁴ The Local Project Appraisal Committee, which included UN sister agencies sitting on the Project Executive Group, on 5 April 2005 reviewed the capacity of Chumchon Thai Foundation and agreed that it is the only organisation that meets required criteria as the implementing partner for this component.

The Chumchon Thai Foundation has a proven track record in community development having undertaken community development and upgrading projects since 1992 and has managed projects funded by Danida, World Bank and UNESCAP. One of the objectives of Chumchon Thai Foundation is to support and strengthen any organisation or group which aims to develop poor communities. As such, the Foundation serves as an umbrella body for many other NGO's working on community development and enhancement and occasionally provides technical and financial resources to these organisations hence strengthening both community and NGO networks. Further details of Chumchon Thai Foundation are provided in Annex 1.

For each of the project sites a flexible multi-stakeholder working group will be established. The multi-stakeholder working group will include the community, the relevant government agency particularly at the local level and provincial level, Chumchon Thai Foundation and other organisation and institutions who are supporting the rehabilitation needs of the community. The stakeholder forum will work closely to develop an overall strategic framework which will outline the rehabilitation and recovery needs of the target communities, the time frame, budget and responsible stakeholder of the respective activities in the plan.

e. Component 3 and 4: Building Capacity of Local Government Organisations in Participatory Rehabilitation Planning and Documentation of Best Practices.

The UNDP will secure the expertise of UN-HABITAT to implement these two components. UN-HABITAT will draw on its accumulated global experience of working with cities over the last 20 years on issues of governance, participatory planning, and disaster preparedness and response. UN-HABITAT will provide the necessary technical backstopping and assume technical advisory roles for these two components that will be implemented by selected Thai Partners, and in turn complementing their existing capacity with UN-HABITAT knowledge and networks.

⁴ Primary target communities are Sai Dam in Ranong, Tung Wa in Phang Nga and Ta Chat Chai in Phuket, and secondary target communities include Koh Muk Island in Trang.

UN-HABITAT will work in close co-ordination with the Department of Local Administration (DLA) and also contract the services of the Thailand Environmental Institute (TEI) for execution of elements of Component 3. TEI is already working with UN-HABITAT on a Sustainable Cities Project (and has been selected as a national anchor partner by the UN-HABITAT Sustainable Cities Programme) in Thailand and as such TEI can draw on its involvement to further enhance the development of regional learning networks to support municipalities. The DLA will also support, monitor and evaluate the capacity building initiatives in the selected local government organisations. UN-HABITAT will also be responsible for implementing selected project activities as indicated in the Results and Resources Framework in regards to brokering relationships among provincial and local authorities and the communities, provision of needed knowledge and skills in building the capacity of local government organisations in participatory rehabilitation planning and documentation of change, good practices and lessons learnt.

A separate Standard Letter of Agreement (LOA) between UNDP and UN-HABITAT will specify the nature and scope of UN-HABITAT responsibilities for components 3 and 4, services to be provided, including UN-HABITAT plan of operations, reporting requirements and other necessary provisions.

- f. *Component 5: Promote cultural heritage and participation of indigenous people in post-tsunami development and co-management of marine resources conservation in protected area*
- The UNDP will secure the expertise of UNESCO and Chulalongkorn University Social Research Institute for the implementation this component of the project. UNESCO and Chulalongkorn University Social Research Institute have been working on a project since 1998 with the indigenous people of Thailand's Andaman Sea which currently incorporates a phase dedicated to socio-economic monitoring of the Moken people of Surin Islands Marine National Park (Phang Nga) and the Urak Lawoi people of Lipe Island, Tarutao National Park (Satun). UNDP and UNESCO, together with Chulalongkorn University Social Research Institute and the relevant national Thai partners, will work towards setting up a multi-stakeholder forum for development and management of marine resources conservation as well as build mechanisms through some demonstration projects for preservation of indigenous culture.

UNDP and UNESCO will be working in close consultation with the following organisations for the implementation of this component:

- Chulalongkorn University Social Research Institute, Bangkok
- Department of Natural Resources and Environment
- Department of Fisheries
- Local Government and Provincial Authorities
- Tourism Authority of Thailand and Private Sector
- NGOs (currently an NGO is being set up to represent sea gypsy communities)
- Local communities (Surin Islands, Ranong, PhangNga, Phuket, Krabi and Satun)

Chulalongkorn University Social Research Institute is a public organisation within Chulalongkorn University, a state university. The Institute was established in accordance with the Royal Decree of the establishment of the Institute promulgated on 22 April 1974. It has been undertaking research projects on sea gypsies for over a decade. They have detailed data on the traditions, culture and livelihood of sea gypsies. The institute has also undertaken detailed studies and a needs assessment on the development challenges

facing sea gypsies and therefore is well placed to work on one of the project sites and support and rehabilitation and recovery efforts of the selected community. The Local Project Appraisal Committee, which included UN sister agencies sitting on the Project Executive Group, on 5 April 2005 reviewed the capacity of Chulalongkorn University Social Research Institute and agreed to seek its services for this component. Further details of Chulalongkorn University Social Research Institute are provided in Annex 2.

A separate Standard Letter of Agreement (LOA) between UNDP and UNESCO and/or UNDP and Chulalongkorn University Social Research Institute, as necessary, will specify the nature and scope of responsibilities for components 5, services to be provided, reporting requirements and other necessary provisions.

In the above components, UNDP Resident Representative, as DEX implementing agency, may decide to have certain activities directly implemented by UNDP (e.g., travel, technical personnel, training, procurement) to facilitate and ensure timely project implementation and its completion according to the workplan, given the deadline of year end 2005 imposed on UNDP by the door.

Part IV. Monitoring and Evaluation

The project will be subject to current UNDP monitoring and evaluation rules and procedures. Overall monitoring of the project will be the joint responsibility of UNDP, Thailand International Development Cooperation Agency (TICA) and CODI. The Project Executive Group will serve as a major monitoring and evaluation mechanism of the overall project.

Over the course of the project, three review meetings and one concluding meeting of the Project Executive Group will be organized.

- Review Meeting 1: To be organized in April 2005 to review work plan and current situation of different sites.
- Review Meeting 2: To be organized in July 2005 to review work progress.
- Review Meeting 3: To be organized in November 2005 to review work progress and results.
- Concluding Meeting: To be organized in January 2006 to review final reports and discuss lessons learnt.

Part V. Reporting by Implementing Partners

Financial Reports

- Cumulative monthly financial reports
- Ad-hoc cumulative financial and progress reports
- Final financial report

Substantive Reports

- Quarterly progress reports
- Ad-hoc reports on progress to-date
- Final Report, including executive summary and lessons learnt.

Part VI. Legal Context

The project document shall be the instrument envisaged in the Standard Supplement Provisions to the Project Document.

The following types of revision may be made to this project document with the signature of the UNDP Resident Representative only, provided she or he receives assurance that the other signatories of the project document have no objections to proposed changes:

- Revision in, or addition of, any of the annexes of the project document and the agreement, which is a precondition for UNDP assistance;
- Revision, which do not involve significant changes in the immediate objectives, outputs and activities of the project, but are caused by the rearrangement of inputs already agreed to or by cost increases due to inflation;
- Mandatory revisions, which re-phase the delivery of agreed project inputs or increased expense of other costs of which take into account agency expenditure flexibility.

Section II
RESULTS AND RESOURCES FRAMEWORK

Intended Outcomes:

1. Victims in relief centres in tsunami-affected provinces are organised and have developed plans for the rehabilitation of their respective settlements, established new support mechanisms within their communities and where necessary acquire skills for alternative livelihood.
2. Traditional Communities including sea gypsies are empowered to plan and implement the rehabilitation and recovery needs of their respective areas which strengthen the existing support networks, and which are supportive of their traditional livelihoods and/or livelihoods of their choices, in partnership with provincial and local authorities.
3. Capacity of provincial and local authorities increased in participatory rehabilitation planning, which reduces vulnerability of the poor to future disasters.
4. Community and local government organisation networks are strengthened.
5. Mechanisms in place to preserve traditional cultures and promote participation of indigenous people in the community development and management of marine resources conservation

Outcome Indicators

1. Victims in relief centres in tsunami-affected provinces are organised and have developed plans for the rehabilitation of their respective settlements, established new support mechanism within their communities and where necessary acquired skills for alternative livelihood
 - 1.1. Community organised into working groups and planning on rehabilitation and livelihood restoration developed, including start-up activities of the rehabilitation plan
 - 1.2. Affected households acquired skills in alternative livelihood and start-up activities initiated for new livelihood.
2. Sea Gypsy and Traditional Communities are empowered to plan and implement the rehabilitation and recovery needs of their respective areas which strengthen their existing support networks, and which are supportive of their traditional livelihoods and/or livelihoods of their choices, in partnership with provincial and local authorities.
 - 2.1. Community groups organised and take primary lead in the development of a strategic framework which outlines their rehabilitation and recovery needs.
 - 2.2. Community groups implement aspects of rehabilitation and recovery plan in partnership with local government organisations and other stakeholders.
 - 2.3. Living conditions of affected communities improved and cultural support mechanisms strengthened.
3. Capacity of provincial and local authorities increased in participatory rehabilitation planning, which reduces vulnerability of the poor to future disasters.
 - 3.1. Partnerships built between local communities and local government organisations
 - 3.2. Joint planning and implementation of rehabilitation plans between communities and local government organisations.
 - 3.3. New skills acquired by local government staff in participatory planning and disaster preparedness.
4. Community and local government organisation networks are strengthened.
 - 4.1. Traditional and sea gypsy communities share lessons and experiences on their respective rehabilitation planning and implementation strategies.
 - 4.2. Models on participatory rehabilitation planning replicated in other local government organisations.

Section II
RESULTS AND RESOURCES FRAMEWORK

Outcome Indicators (continued)

5. Mechanisms in place to preserve traditional cultures and promote participation of indigenous people in the community development and management of marine resources conservation.
 - 5.1. recommendations developed by indigenous people for conservation of marine resources incorporated into national conservation plans (including proposed world heritage sites)
 - 5.2. models and recommendations for stakeholder engagement with indigenous communities developed
 - 5.3. indigenous cultural exhibition hut and local school curriculum established

Applicable MYFF Service Line

2. Fostering Democratic Governance
 - 2.6 Decentralisation, Local Governance and Urban/Rural Development
4. Crisis Prevention and Recovery
 - 4.2 Recovery

Partnership Strategy

- Provide strategic support where gaps exist, for quickest normalisation of lives of tsunami-affected households
- Support participatory approaches in planning and decision-making
- Work towards community empowerment and community partnership with provincial and local authorities concerned.
- Apply knowledge management approach
- Take full advantage of UNDP's global development network and Thailand's development experience for a two-way relationship
- Partnerships and collaboration with other UN agencies.

Project Title and ID: Support for Rehabilitation of Traditional Communities and Municipalities in Tsunami Affected areas in Thailand				
Component 1: Support to Tsunami Relief Centres				
Output Target Year: 2005				
Indicative Budget: US\$ 55,000				
Objective	Indicative Activities	Expected Outputs	Organisation Responsible	Duration
To provide technical support to communities in relief centres towards the planning of their rehabilitation and recovery needs	a. Organise households into focus groups for planning of rehabilitation and recovery needs.	a. Households organised into focus groups and actively participate in planning rehabilitation and recovery efforts for their respective settlements.	CODI	Mar-April
	b. Determine number of widow and widower households and access support systems required for long term recovery.	b. Sustainable alternative livelihoods identified and training provided to identified households.		April – May
	c. Assist households in determining sustainability of restoring existing livelihood or planning for alternative livelihood	c. Start-up activities for new livelihoods initiated.		May – July
	d. Undertake needs assessment and skills audit of households.	d. Support systems for widow and widower households identified and initiated into rehabilitation plan of respective communities.		
	e. Provide technical support to households for planning initiatives on shelter, land use management, settlement planning, livelihood restoration			
	f. Provide training for alternative career development.			Mar – Dec
	g. Assist victims / households to network and build new support systems			

Project Title and ID: Support for Rehabilitation of Traditional Communities and Municipalities in Tsunami Affected areas in Thailand				
Component 3: Building the Capacity of Local Government Organisations in Participatory Rehabilitation Planning				
Output Target Year: 2005				
Indicative Budget: US\$ 170,000				
Objective	Indicative Activities	Expected Outputs	Organisation Responsible	Duration
To build capacity and knowledge base of local government organisations affected by the tsunami in the areas of participatory rehabilitation planning and sustainable development and growth aimed at reducing vulnerability of the poor against the recent disaster.	<ul style="list-style-type: none"> a. Identify in close collaboration with Department of Local Administration, three target local government organisations to pilot project objectives. b. Assess capacity of local government organisation to undertake participatory rehabilitation planning. c. Determine the rehabilitation needs of the affected communities within the respective jurisdiction of the target local government organisations. d. Identify co-ordinators and group of experts to provide on the job training for municipal or TAO staff in participatory rehabilitation planning. e. Prepare rehabilitation and recovery plans in targeted municipal or TAO areas using participatory planning approaches. f. Identify pilot activities from the rehabilitation plans for implementation. g. Implement pilot activities using participatory approaches. h. Develop tools in participatory rehabilitation planning that can be used by other local government organisations 	<ul style="list-style-type: none"> a. Partnerships built between local communities and local government organisations. b. Rehabilitation plans in targeted municipalities and TAO's developed using participatory approaches. c. Joint Planning and implementation of pilot activities between communities and local government organisations. d. New skills acquired by personnel in target municipalities and TAO's in participatory rehabilitation planning. e. Tools in participatory development planning and vulnerability reduction against future disasters. 	UN-HABITAT / DLA	<ul style="list-style-type: none"> April April – May April – May May – July July – Dec

Project Title and ID: Support for Rehabilitation of Traditional Communities and Municipalities in Tsunami Affected areas in Thailand				
Component 4: Knowledge Sharing and the Documentation of Change, Good Practices and Lessons Learnt.				
Output Target Year: 2005				
Indicative Budget: US\$ 70,000				
Objective	Indicative Activities	Expected Outputs	Organisation Responsible	Duration
To document good practices and lessons learnt of both local government organisations and communities and promote the sharing of knowledge and experiences.	a. International workshop to release global knowledge on core post-tsunami rehabilitation issues	a. Practical conference briefings on core issues	UN-HABITAT	May / June
	b. Document lessons and experiences of local government organisations and prepare cases studies to be shared nationally and internationally.	b. Case studies on good practices and lessons learnt by local government organisations in participatory rehabilitation planning.		May – July
	c. Feed good practices on local government organisations into the planning curriculum of the DLA training institute.	c. Toolkits on participatory rehabilitation planning for local government organisations.		
	d. Prepare toolkits on participatory rehabilitation planning for local government institutions for wider application and disseminate to regional learning networks.	d. Network of local government organisations strengthened and lessons and experiences shared on participatory rehabilitation planning.		
	e. Document the experiences of traditional and sea gypsy communities' recovery and rehabilitation efforts after the tsunami.	e. Case studies / documentary on experiences of and lessons learnt of sea gypsy and traditional communities efforts in rehabilitation and recovery after the tsunami.		April – Dec
	f. Document and disseminate information on changes and good practices of effected sea gypsy and traditional communities.	f. Community networks strengthened and good practices disseminated.		Oct – Dec
	g. Facilitate knowledge and experience sharing			

Project Title and ID: Support for Rehabilitation of Traditional Communities and Municipalities in Tsunami Affected areas in Thailand				
Component 5: Promote cultural heritage and participation of indigenous people in post-tsunami development and co-management of marine resources conservation in protected areas				
Output Target Year: 2005				
Indicative Budget: US\$ 141,000				
Objective	Indicative Activities	Expected Outputs	Organisation Responsible	Duration
Promote cultural heritage and build capacity of indigenous people to actively participate, in the post-tsunami development of conservation regulations.	<ul style="list-style-type: none"> a. Workshop with relevant stakeholders responsible for conservation planning – to review and discuss recommendations made by indigenous people. b. Explore options and provide recommendations for co-management of protected areas c. Construction of traditional boat for knowledge and skills transfer and for community use on Surin Island. d. Development of cultural nature trail – Surin Island. e. Rebuilding of exhibition hut on traditional culture of indigenous people on Surin Island. f. Develop booklet for tourists on resources on Surin Island by indigenous people g. Development of local school curriculum with an emphasis on traditional cultures h. Sharing knowledge and information with relevant stakeholders on indigenous cultures and language. 	<ul style="list-style-type: none"> a. Recommendations for conservation plans inclusive of rights and needs of indigenous people. b. Cultural-nature trail on Surin Island operational with active participation of indigenous people. c. Traditional fishing boat rebuilt served as community boat. d. Exhibition hut on indigenous culture rebuilt. e. Tourist brochure on resources on Surin Island. f. Curriculum developed on traditional cultures. g. Local government organisations and other relevant stakeholders more informed of culture and language of traditional and indigenous people. 	UNESCO / Chulalongkorn University Social Research Institute	<p>April</p> <p>April – June</p> <p>July</p>

Project Resources Framework

Component 1: Support to Tsunami Relief Centres		
Activities	Resources Required	Estimated Budget
a. Organise households into focus groups for planning of rehabilitation and recovery needs. b. Provide technical support to households for planning initiatives on shelter, land use management, settlement planning, livelihood restoration c. Undertake needs assessment and skills audit of households. d. Assist households in determining sustainability of restoring existing livelihood or planning for alternative livelihood. e. Provide training for alternative career development. f. Determine number of widow and widower households and access support systems required for long term recovery. g. Assist victims / households to network and build new support systems	HUMAN RESOURCES <ul style="list-style-type: none"> • Community Organisers and facilitators. • Livelihood development experts • Career development trainers. • Architects, town planners and land tenure experts. • Counsellors and trainers on building support systems. OTHER <ul style="list-style-type: none"> • Workshop and training materials. • Operations travel and management costs 	HUMAN RESOURCES \$41,500 OTHER \$13,500 TOTAL - \$55,000

Component 2: Support Rehabilitation and Recovery Efforts of Traditional and Sea Gypsy Communities.		
Activities	Resources Required	Estimated Budget
<p>a. Assist community to identify stakeholders for the planning and implementation of their rehabilitation and recovery plan.</p> <p>b. Establishment of multi-stakeholder working groups in target communities which include community representatives, local government organisation representatives, NGO representation supporting community and other private and public organisations and institutions supporting the recovery efforts of the target community.</p> <p>c. Support community organisation process and assist community to form task forces in the respective areas of the rehabilitation and recovery plan.</p> <p>d. Identify resources required for rehabilitation or improvement of shelter, livelihood restoration, eco-tourism, land use management, settlement planning and landscaping, solid waste management and/or other needs identified in the rehabilitation and recovery plan.</p> <p>e. Identify resources required for strengthening existing livelihoods, and or alternative livelihoods.</p> <p>f. Procure required resources i.e. building materials, fishing gear, materials for boat construction and repair.</p> <p>g. Identify and deploy technical experts in formulating and implementing eco-tourism strategy, solid waste management, cultural heritage preservation and development, and livelihood development.</p> <p>h. Create a public space in target communities for the exchange, sharing and learning of cultural-related issues</p> <p>i. Establish community networking events.</p> <p>j. Set up community forums for exchange of experiences on various rehabilitation and recovery initiatives.</p>	<p>HUMAN RESOURCES</p> <ul style="list-style-type: none"> • Community Organizers and facilitators. • Livelihood development experts, • Eco-Tourism strategists, Community training and Development Experts, • Architects, Town planning and landscaping experts. • Cultural heritage experts. • Waste Management Expert <p>PILOT ACTIVITIES</p> <ul style="list-style-type: none"> • Building Materials, • Fishing equipment, • Materials for boat repair and reconstruction <p>OTHER</p> <ul style="list-style-type: none"> • Workshop training costs, • Project travel and networking travel costs, • Operations and management costs, • Reporting costs 	<p>Primary Target</p> <p>SAI DAM Human Resources \$30,000 Procurement / Sub Contracts \$50,000 Other \$20,000 Sub Total - \$100,000</p> <p>TUNG WA Human Resources \$21,500 Procurement / Sub Contracts \$70,000 Other \$18,500 Sub Total - \$110,000</p> <p>TA CHAT CHAI Human Resources \$36,000 Procurement / Sub Contracts \$100,000 Other \$39,000 Sub Total - \$175,000</p> <p>Secondary Target: -KOH MUK -Networking of traditional and sea gypsy communities</p> <p>TOTAL – \$385,000</p>

Component 3: Building the Capacity of Local Government Organisations in Participatory Rehabilitation Planning		
Activities	Resources Required	Estimated Budget
<p>a. Identify in close collaboration with Department of Local Administration, three target local government organisations to pilot project objectives.</p> <p>b. Assess capacity of local government organisation to undertake participatory rehabilitation planning.</p> <p>c. Determine the rehabilitation needs of the affected communities within the respective jurisdiction of the target local government organisations.</p> <p>d. Identify co-ordinators and group of experts to provide on the job training for municipal or TAO staff in participatory rehabilitation planning.</p> <p>e. Prepare rehabilitation and recovery plans in targeted municipal or TAO areas using participatory planning approaches.</p> <p>f. Identify pilot activities from the rehabilitation plans for implementation.</p> <p>g. Implement pilot activities using participatory approaches.</p> <p>h. Develop tools in participatory rehabilitation planning that can be used by other local government organisations</p>	<p>HUMAN RESOURCES</p> <ul style="list-style-type: none"> • Regional Co-ordinators • Participatory Planning Experts • Shelter and Town Planning Experts • Land Management Experts <p>PILOT ACTIVITIES</p> <ul style="list-style-type: none"> • Infrastructure costs • Toolkits <p>OTHER</p> <ul style="list-style-type: none"> • Workshops and Training Costs, • Project travel and mission costs, • Programme management and operation costs • Reporting costs 	<p>HUMAN RESOURCES \$61,200</p> <p>PILOT ACTIVITIES \$75,000</p> <p>OTHER \$33,800</p> <p>TOTAL - \$170,000</p>

Component 4: Knowledge Sharing and the Documentation of Change, Good Practices and Lessons Learnt.		
Activities	Resources Required	Estimated Budget
a. International workshop to release global knowledge on core post-tsunami rehabilitation issues b. Document lessons and experiences of local government organisations and prepare cases studies to be shared nationally and internationally. c. Feed good practices on local government organisations into the planning curriculum of the DLA training institute. d. Prepare toolkits on participatory rehabilitation planning for local government institutions for wider application and disseminate to regional learning networks. e. Document the experiences of traditional and sea gypsy communities' recovery and rehabilitation efforts after the tsunami. f. Document and disseminate information on changes and good practices of effected sea gypsy and traditional communities. g. Facilitate knowledge and experience sharing	HUMAN RESOURCES <ul style="list-style-type: none"> • Documentation Specialists, • Editors, • Translators, • Publications specialists OTHER <ul style="list-style-type: none"> • Materials Production costs, • Workshop costs • Networking and Travel costs • Programme management and operation costs 	HUMAN RESOURCES \$21,800 OTHER \$48,200 TOTAL - \$70,000

Component 5: Promote cultural heritage and participation of indigenous people in post-tsunami development and co-management of marine resources conservation in protected area		
Activities	Resources Required	Estimated Budget
<p>a. Workshop with relevant stakeholders responsible for conservation planning – to review and discuss recommendations made by indigenous people.</p> <p>b. Explore options and provide recommendations for co-management of protected areas</p> <p>c. Construction of traditional boat for knowledge and skills transfer and for community use on Surin Island.</p> <p>d. Development of cultural nature trail – Surin Island.</p> <p>e. Rebuilding of exhibition hut on traditional culture of indigenous people on Surin Island.</p> <p>f. Develop booklet for tourists on resources on Surin Island by indigenous people</p> <p>g. Development of local school curriculum with an emphasis on traditional cultures</p> <p>h. Sharing knowledge and information with relevant stakeholders on indigenous cultures and language.</p>	<p>HUMAN RESOURCES</p> <ul style="list-style-type: none"> • Researchers • Project Assistants • Documentation Specialists, • Editors, • Translators, • Publications specialists <p>PILOT ACTIVITIES</p> <ul style="list-style-type: none"> • infrastructure costs for boat building exhibition hut etc <p>OTHER</p> <ul style="list-style-type: none"> • Materials Production costs, • Workshop costs • Networking and Travel costs • Programme management and operation costs 	<p>HUMAN RESOURCES \$50,000</p> <p>PILOT ACTIVITIES \$31,000</p> <p>OTHER \$15,000</p> <p>Koh Lao Human Resources \$ 10,000 Procurement/Sub-contract \$ 30,000 Other \$5,000</p> <p>TOTAL - \$141,000</p>

Overall Project Management and Coordination (UNDP)	<ul style="list-style-type: none"> • Project Coordinator • Project Advisors, • Project/Finance Assistants, • Travel, • Reports and Documentation, • Miscellaneous • Facilities and Administration (GMS) 	TOTAL - \$179,000
PROJECT TOTAL		\$1,000,000

ANNEX 1

Chumchon Thai Foundation

Chumchon Thai Foundation was established on the 9th of September 1992 to work closely with the Office of Urban Community Development, an independent agency under the National Housing Authority. The Office of Urban Community Development was later renamed as Community Organizations Development Institute (CODI). The Foundation aimed to support slum communities in towns to improve their well being by setting up saving scheme and loaning system with low interest for poor people.

Chumchon Thai Foundation has expanded its mandate to cover the areas of both towns and rural areas. Here are its current objectives;

1. To support and to be a focal point of cooperation between state's agencies, private sector and social groups in both domestic and international level to help the poor in towns and rural area.
2. To support and strengthen any organisation or group which aims to develop poor communities.
3. To initiate and implement new approaches which will be benefit to the development and solution to the poor.
4. To produce all media materials (printed, audio visual and Internet) and to support media production for any individual, organisation and group who wants to publicize the development activities.

The Foundation is working into 2 levels;

1. Policy level; there is a committee consisting of many experts, social workers, community leaders and etc to manage the objectives and direction of working organisations.
2. Implementation level; the foundation will provide financial support for organisation, individual or any group to conduct project. It works closely with various agencies such as CODI, Social Fund Office etc.

Since 2002, the Foundation has expanded its scope to support these three areas.

1. The development of environment in towns in order to link it with a national project called "Healthy Cities"
2. The welfare for the elderly by providing supports to these people.
3. Waste/Sewage management scheme conducted by communities

ANNEX 2

Chulalongkorn University Social Research Institute

The Social Research Institute was initially established in 1967 as a project of the Faculty of Political Science, Chulalongkorn University. Its main objective was to undertake research work according to the needs of national development. Basically, it focused on social sciences research.

The Institute was later promoted to the status of an autonomous organization within Chulalongkorn University in accordance with the Royal Decree of establishment of the Institute promulgated on 22 April 1974.

At present, the Institute emphasizes an interdisciplinary approach to seek knowledge and understanding of social processes in relation to the economy, society, politics, education, culture, and the environment and the ensuing impacts of changes in these areas.

The approach is directed towards the objectives of :

- Developing research methodology
- Communicating the results of academic studies to the public
- Making research work relevant in order to be able to make direct and indirect recommendations on national development directions that incorporate socially-concerned policies and issues
- Suggesting positive policies and directions of social development
- Monitoring their potential adverse impacts on members of Thai society and its social system.

<http://www.cusri.chula.ac.th/>